



CONNECT PRO

Switching out the electronics module on the Connect Pro Wall and Base Station charging points.

The standard power supply with the IPORT Connect Pro Wall and Basestations is a 24V 1.5A DC power supply.

There is an optional PoE+ and Network adaptor : SO-72101- now supplied with Surface Mount, compatible as an option for Connect Pro Wall and Basestations.

The SO-72101 PoE+ & Network adaptor enable hardwired data and power over PoE+ using a single Cat 5 cable. By providing security of a direct connection to your network and eliminating Wi-Fi dropout, you can be assured your iPad is always charged and connected to your network.



# CONNECT PRO

SO-72101 PoE+ adapter



CONNECT POE+ NETWORK  
ADAPTER PROVIDES RELIABLE  
HARDWIRE CONNECTIVITY AND  
POWER TO IPAD AT ALL TIMES

The reliability of hardwired connectivity alongside the ease of install with PoE+ to enable your iPad solution to remain powered and connected at all times.



CONNECT PRO

SO-72101 PoE+ adapter

**COMPATIBLE WITH**

**CONNECT PRO**

CONNECT PRO WALLSTATION

CONNECT PRO BASESTATION

CONNECT PRO VESA STATION





CONNECT PRO

SO-72101 PoE+ adapter AND Network with USB-C iPads



**Power Specs:**

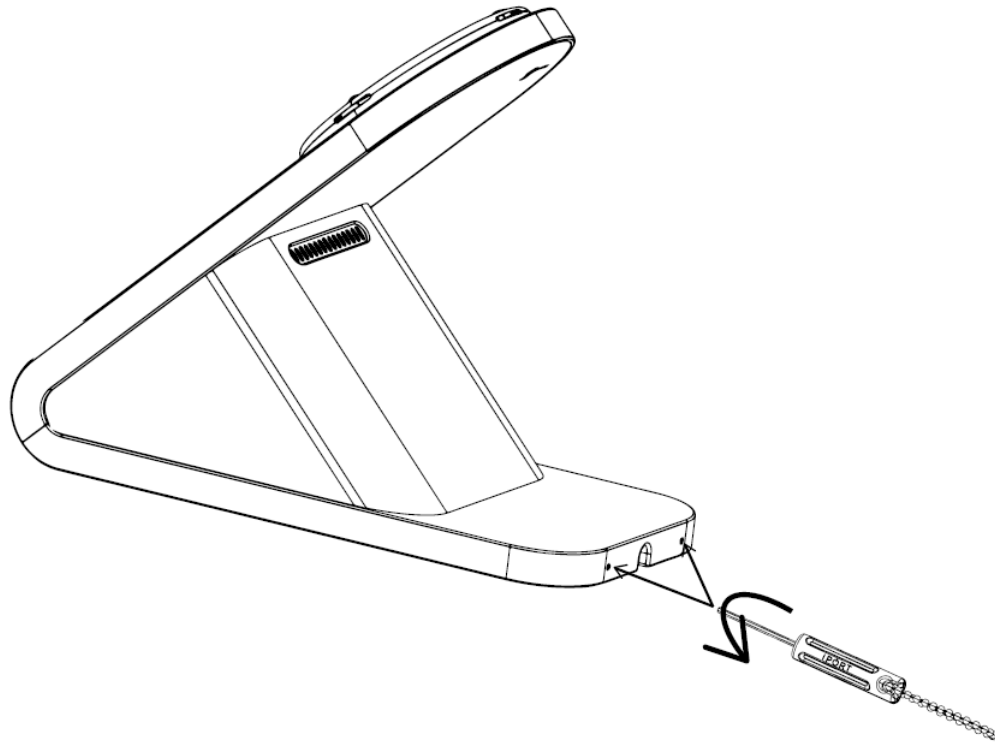
**Input: 48-56VDC 802.3at (PoE+)**

**Output: 5.3VDC, 3.0A**

**Max Network Speed: 10/100Mbps**

**I PORT CONNECT PoE+ Network Adapter Charges at a max 15W of power to the iPad.**

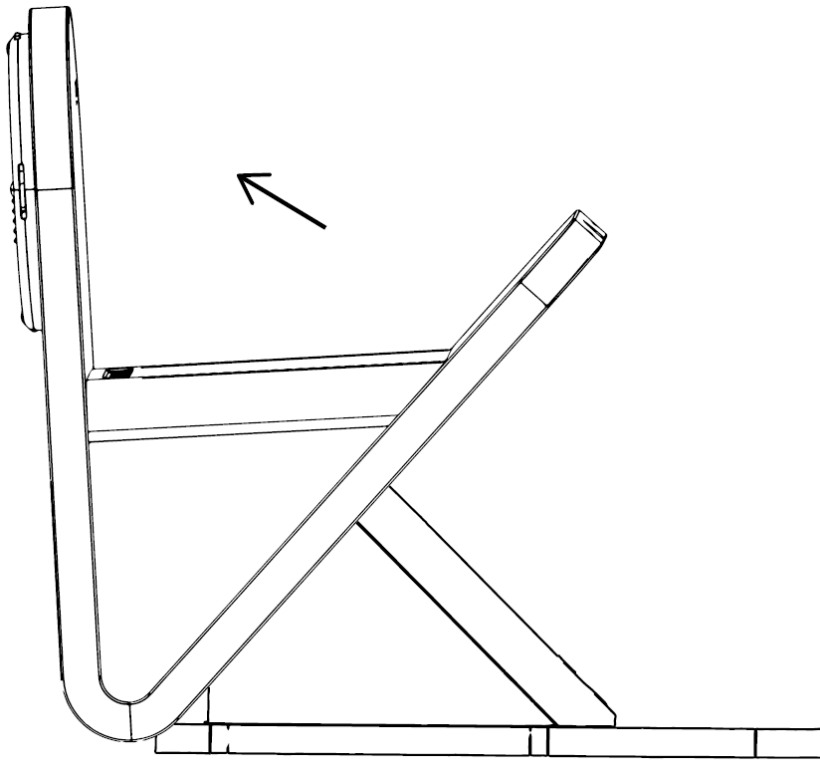
To fit SO-72101 Adaptors to Base stations – to remove the cover.



1. Remove IPORT Network Adapter from the box and place on a table.

2. Insert the IPORT Security Tool into the small holes in the back of the BaseStation foot. Rotate the tool counterclockwise until it stops. Repeat for the second hole.

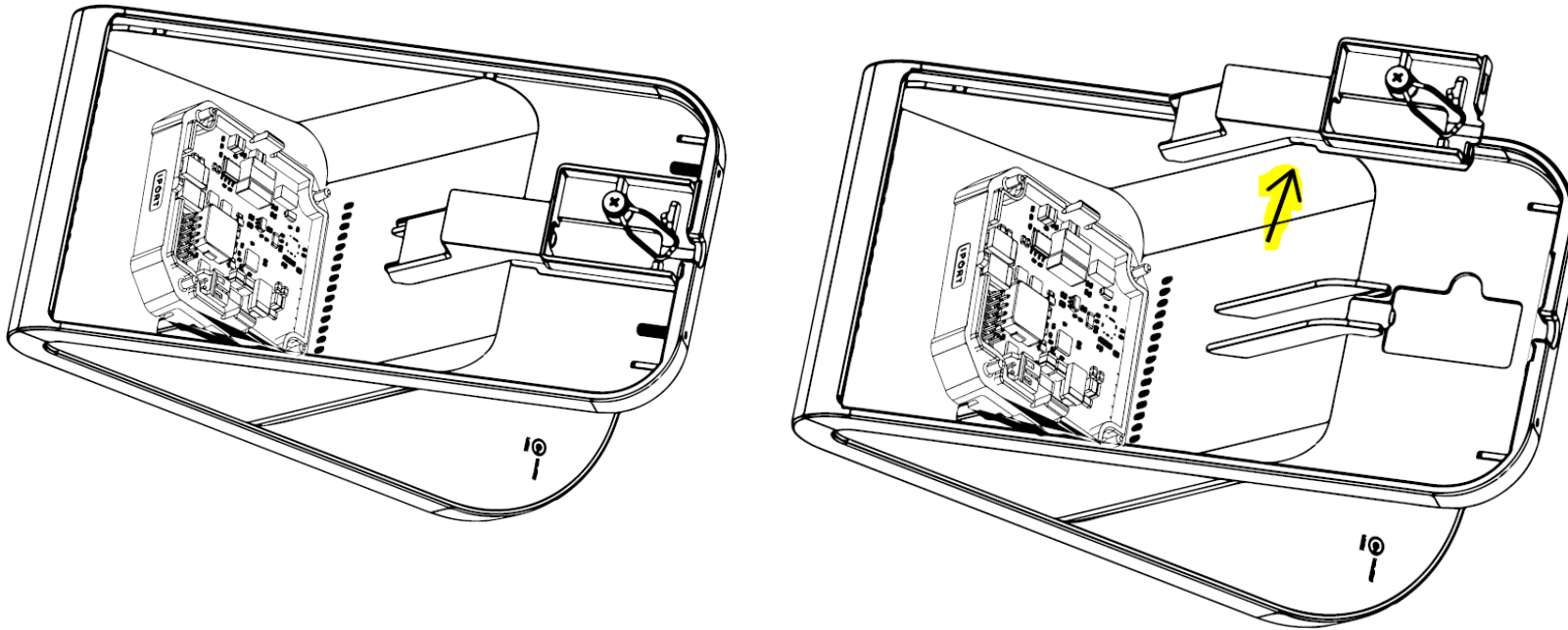
To fit SO-72101 Adaptors to Base stations – to remove the cover.



3. Tilt the BaseStation forward to allow the BaseStation weight to come out of the bottom of the BaseStation.

Use caution as the BaseStation weight is very heavy.

To fit SO-72101 Adaptors to Base stations – to remove the DC Barrel.



4. Disconnect the DC Barrel cable if installed and pop out the BaseStation Cable Housing cover.

# I P O R T

## CONNECT PRO

To fit SO-72101 Adaptors to Connect Pro Wall stations or Base stations



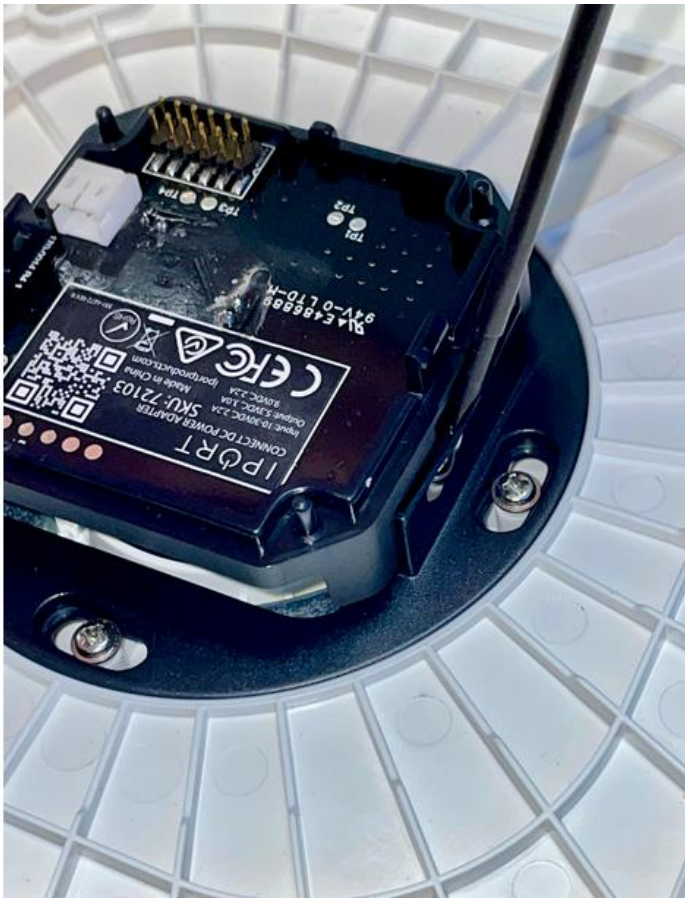
Connect Pro Wallstation with standard electronics board as fitted straight out of the carton.





# CONNECT PRO

To fit SO-72101 Adaptors to Connect Pro Wall stations or Base stations

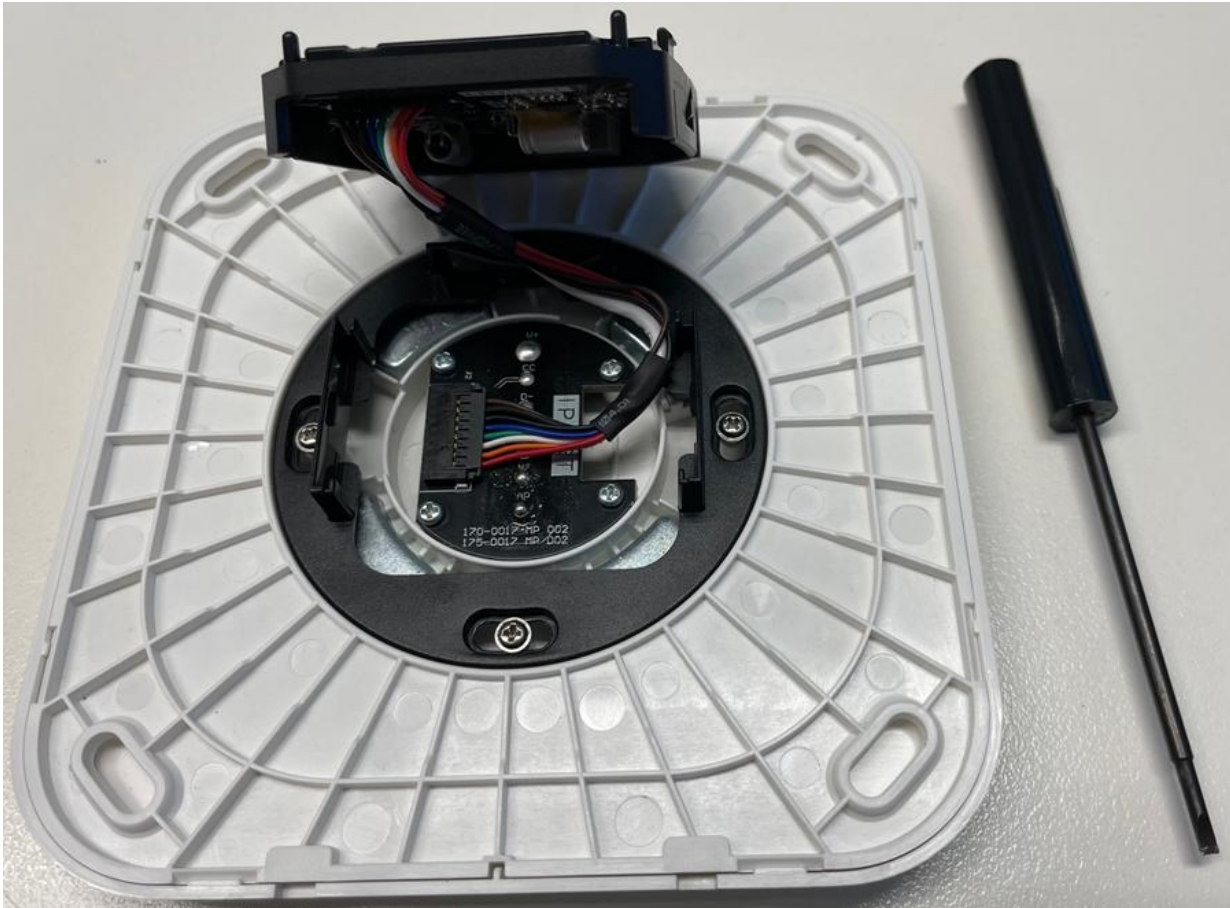


With a blade driver or similar gently release the 2 side clips from the electronics board – and allow it to lift away.



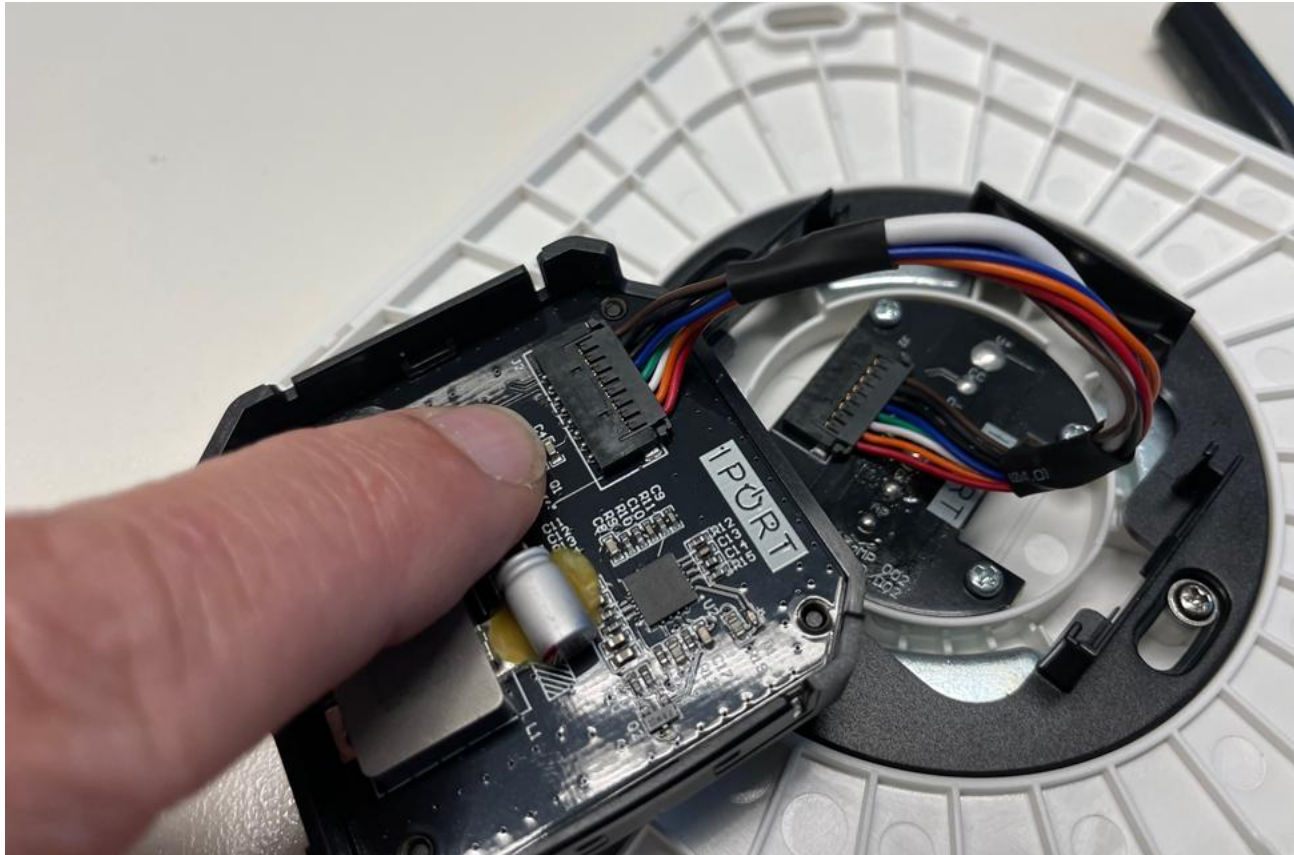
CONNECT PRO

To fit SO-72101 Adaptors to Connect Pro Wall stations or Base stations



Electronics board released.

To fit SO-72101 Adaptors to Connect Pro Wall stations or Base stations



Remove the Molex connector be able to remove the original electronics board.



CONNECT PRO

To fit SO-72101 Adaptors to Connect Pro Wall stations or Base stations



Original Connect Pro Wall or Basestation  
Electronics board removed



To fit SO-72101 Adaptors to Connect Pro Wall stations or Base stations

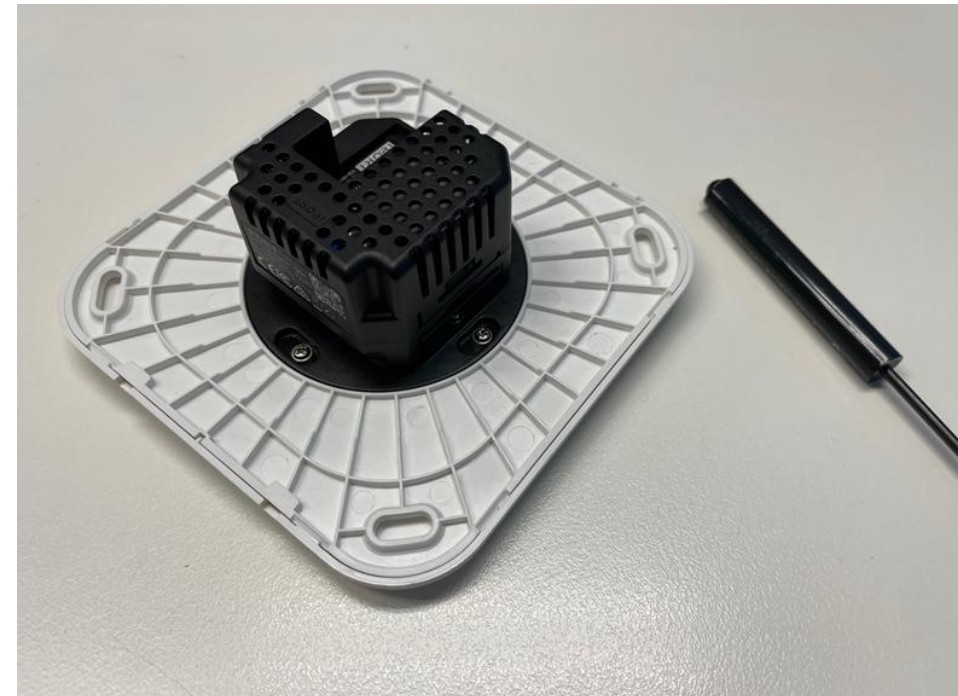


To fit SO-72101 or SO-72102 Adaptors – reconnect the molex connector to the board – note the red cable is on the inside edge.



CONNECT PRO

To fit SO-72101 Adaptors to Connect Pro Wall stations or Base stations



To fit SO-72101 or SO-72102 Adaptors – reconnect the adaptor to the wall or basestation – ready to go.